

Certificate

Certified Passive House component
for cool, temperate climate, valid until 31.12.2020

Passive House Institute
Dr. Wolfgang Feist
64283 Darmstadt
GERMANY

Category: **Facade anchor**
Manufacturer: **Hilti Deutschland AG**
86916 Kaufering, GERMANY
Product name: **FOX VT**

The following criteria were used in awarding this certificate:

Efficiency Criterion

In two typical applications*, the construction fulfills the requirements of

$$\Delta U_{WB} \leq 0.010 \text{ W/(m}^2\text{K)}$$

Comfort Criterion

The inner surface must be warm enough to prevent mould as well as uncomfortable down-draught and radiation losses.

$$\theta_{i,\min} \geq 17^\circ\text{C}$$

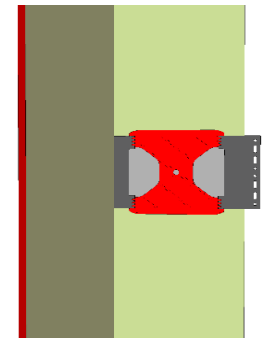
Thermal data of the certified component

| Konsole FOX T | thermal bridge coefficient χ [W/K] | minimum inner surface temperature $\theta_{i,\min}$ [°C] |
|------------------|---|---|
| FOX VT-280_11 | 0.0028 | 19.44 |

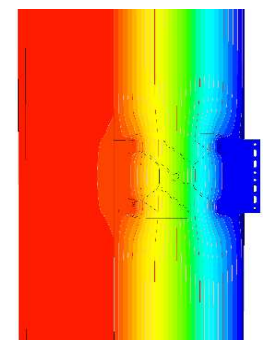
| Validation reference buildings | Row House | School building |
|-----------------------------------|-----------|-----------------|
| ΔU [W/m ² K] | 0.008 | 0.008 |

* The criterion has been validated with two representative buildings, a row house and a school building.

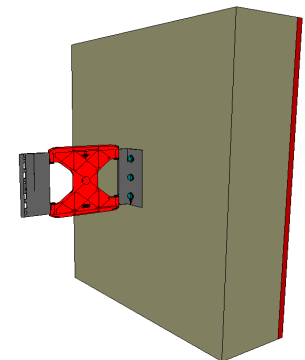
www.passivehouse.com



Representation of the
FOX VT-280_11



Isothermal map of the
FOX VT-280_11



Representation of the
FOX VT-280_11



**CERTIFIED
COMPONENT**

Passive House Institute