



The following excerpt are pages from the [North American Product Technical Guide Volume 3: Modular Support Systems Technical Guide, Edition 1](#) .

Please refer to the publication in its entirety for complete details on this product including load values, approvals/listings, general suitability, finishes, quality, etc.

To consult directly with a team member regarding our modular support system products, contact Hilti's team of technical support specialists between the hours of 7:00am – 6:00pm CST.

US: 877-749-6337 or HNATechnicalServices@hilti.com

CA: 1-800-363-4458, ext. 6 or CATechnicalServices@hilti.com

4.0 ADDITIONAL HARDWARE

HEX NUTS

Material Specifications

Material	Dimensions	Finish	Thread
ASTM A563 Grade A; Stainless Steel SS316	ASME/ANSI B18.2.2 - 1986	ASTM B 633-98, SC 1 Type I	Class 2A fit; Class 2B thread; ASME B1.1

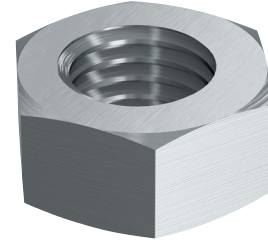


Table 276 - Ordering Information

Description	Weight Per Package (lbs)	Quantity Pack	Item No.
Hex nut-heavy 1/4"	1/2	200	411751
Hex nut-heavy 3/8"	11/16	100	411752
Hex nut-standard 3/8" (SS316)	9/16	100	411775
Hex nut-heavy 1/2"	7/8	100	411753
Hex nut-standard 1/2" (SS316)	3/4	100	411776
Hex nut-5/8"	15/16	50	411754
Hex nut-standard 5/8" (SS316)	15/16	50	411777
Hex nut-3/4"	1-1/8	25	411755
Hex nut-standard 3/4"	1-1/8	25	411778

- Per MSS-SP-58-2002, the ultimate tensile loads are based on a tensile stress of 50,000 psi multiplied by the threaded rod root area based on coarse thread UNC.
- AISC Allowable Tensile load = $0.33 \times F_u \times A_{nom}$
AISC Allowable Shear load = $0.17 \times F_u \times A_{nom}$

WASHERS

Material Specifications

Material	Dimensions	Finish	Thread
ASTM A563 Grade A; Stainless Steel 316	ASME/ANSI B18.2.2 - 1986	ASTM B 633-98, SC 1 Type I	Class 2A fit; Class 2B thread; ASME B1.1

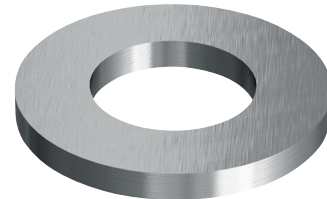


Table 277 - Ordering Information

Description	Inside Diameter (in)	Outside Diameter (in)	Quantity Pack	Item No.
Washer 1/4"	0.312	0.734	200	411756
Washer 1/4" (SS316)	0.281	0.625	200	411779
Washer 3/8"	0.438	1.000	200	411757
Washer 3/8" (SS316)	0.406	0.813	200	411780
Washer 1/2"	0.562	1.375	100	411758
Washer 1/2" (HDG)	0.512	0.945	100	304771
Washer 1/2" (SS316)	0.531	1.250	100	411781
Washer 5/8"	0.656	1.312	100	411759
Washer 5/8" (SS316)	0.656	1.312	100	411782
Washer 3/4"	0.812	1.469	50	411760
Washer 3/4" (SS316)	0.812	1.500	50	411783
Fender washer 1/4"	0.281	1.250	100	411761
Fender washer 1/4" (SS316)	0.281	1.250	100	411784
Fender washer 3/8"	0.406	1.500	100	411762
Fender washer 3/8" (SS316)	0.406	1.500	100	411785
Fender washer 1/2"	0.531	2.000	100	411763
Fender washer 1/2" (SS316)	0.531	2.000	100	411787