



APPLICATION:

Conduits Through Rigid Floor

ID:

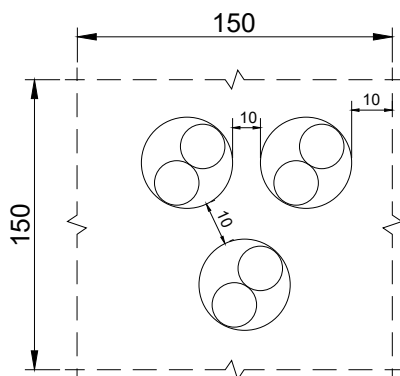
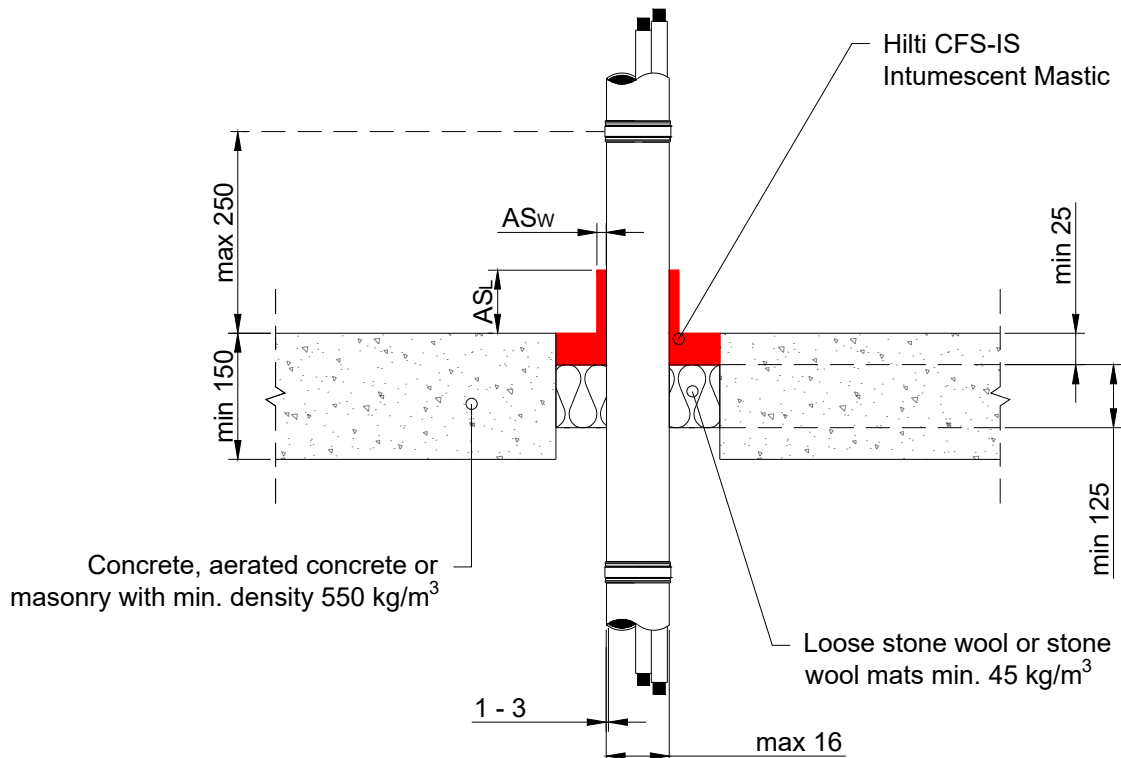
IS:SP-RF-E-02**INFORMATION:**

- Not to scale
- All units are in millimetres
- Tested according EN 1366-3
- [Approval ETA-10/0406](#)

CFS-IS Intumescent Sealant

REV:

DATE:

01**10/2024****Fire Rating up to EI 120****Page 2/2**

Conduit Type / Ø	AS _w	AS _L	Classification
Small steel conduits and tubes ≤ Ø 16, arranged linear, with or without cables*	10	50	EI 120 C/U
	10	100	EI 120 C/U
Small plastic conduits and tubes ≤ Ø 16, arranged linear, with or without cables*	10	50	EI 120 U/C
	10	100	EI 120 U/C

Max opening size 150mm x 150mm or circular openings of equivalent area (Ø 165 mm).

Min 100mm distance to other firestopping penetrations.

Min. 200mm to other penetrations (e.g., doors, windows etc.)

* All sheathed cable types currently and commonly used in building practice in Europe (e.g., power, control, signal, telecommunication, data, optical fibre)

1. The application limits on this detail are for guidance purposes only. For more detailed information based on the full range of available test results please contact the Hilti Technical Advisory Service.

2. The product and application has been assessed as a minimum to the BS 476 standard. It may have additional European and worldwide testing. Please contact Hilti for further information.

3. All installations should be carried out in accordance with Hilti's installation instructions and by competent & experienced installers using Hilti branded products.

4. All services are to be correctly and adequately supported to prevent collapse and distortion.