

# Collar bushing

## HIT-CB

For electrical insulation of base plate to anchor element.



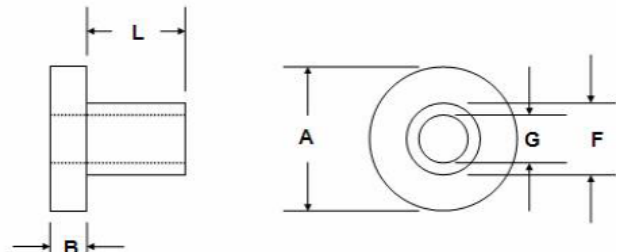
### Applications

- Fastenings in railway tunnels where current causes high safety risks
- Wide range of fastenings where the current puts the fastening application at risk
- Machine fastenings

### Advantages

- Physical separation of the anchor rod from the concrete and potential rebar
- Technical data available for load values with RE-500 and extensive data on electrical insulation

Anchor Ø	L	A	B	F*	G*
Type	mm	mm	mm	mm	mm
M8	5	16	1.5	10.2	8.2
M10	5	20	1.5	12.2	10.2
M12	8	24	1.5	14.2	12.2
M16	10	30	1.5	18.2	16.2
M20	10	37	2	22.2	20.2
M24	12	44	2	26.2	24.2
M27	12	50	2	30.2	27.2



### Ordering

Product description	Rod diameter	hole size* base plate [mm]	Minimum order quantity	Item Number
HIT-CB M8	M8	10.4	200 pc	384515
HIT-CB M10	M10	12.4	200 pc	384516
HIT-CB M12	M12	14.4	200 pc	384517
HIT-CB M16	M16	18.4	200 pc	384518
HIT-CB M20	M20	22.4	100 pc	384519
HIT-CB M22	M22	24.4	100 pc	433770
HIT-CB M24	M24	26.4	100 pc	384520
HIT-CB M27	M27	30.4	50 pc	384521
HIT-CB M30	M30	33.4	50 pc	384522
HIT-CB M33	M33	36.4	50 pc	384523

\* Tolerances: +0.2/- 0.0mm

▲ Subject to lead time. Contact Hilti prior ordering.